

E-LITE 450

866 Mbps Wireless Broadband System
4.920-6.100GHz*



NEW FEATURES



IP67 pressure relief vent



High-visibility RSSI + power indicator



Larger panel antenna w/ silkscreened logo

KEY BENEFITS

- ✓ **NEW!** IP67 pressure relief vent ensures –
 - pressure is equalized within enclosure to effectively manage condensation
 - protection against liquid ingress and contaminants such as dirt, dust and other potentially harmful particulates
- ✓ Reliable connectivity no matter the weather!
- ✓ Fastest data rates to handle Live Video and critical data backhaul applications flawlessly
- ✓ Real-time auto-optimization with Dynamic Frequency Selection and built-in Spectrum Analyzer
- ✓ Embedded GPS for precise geo-location
- ✓ At-a-glance RSSI + Power indicator

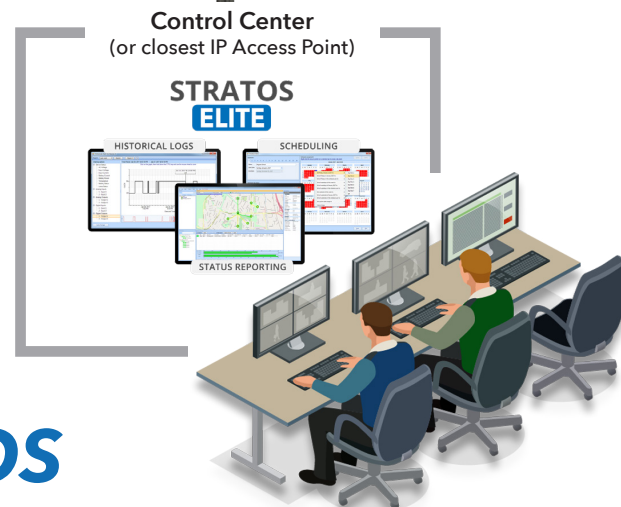
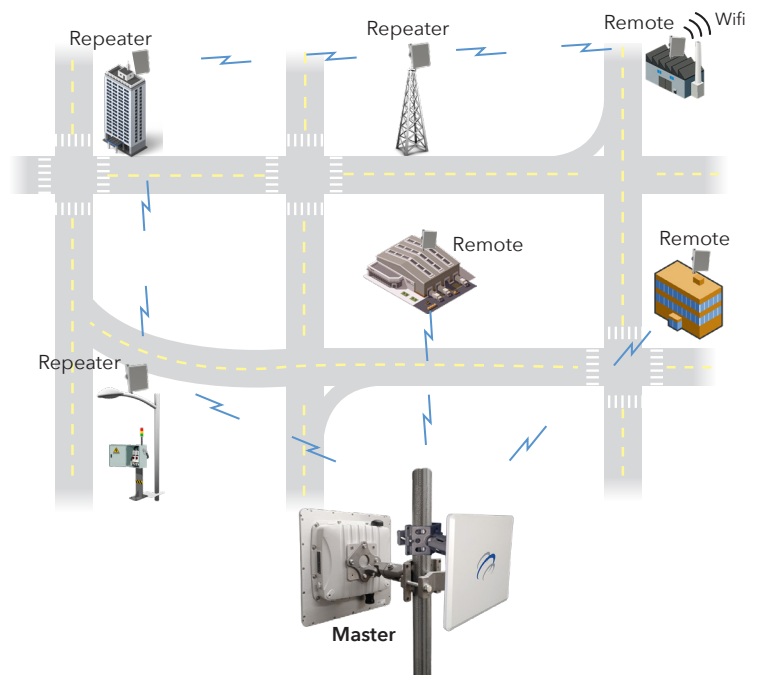
Visualize, Control and Monitor
your Encom Wireless Network with

STRATOS

HIGH-PERFORMANCE. RUGGEDNESS. RELIABILITY.

The **E-LITE 450** is a high-performance broadband radio that delivers the highest throughput, lowest latency and outstanding coverage in any outdoor environment. Perfect for the most demanding applications such as video streaming or backhaul applications, with features such as:

- PoE (802.3af/at compliant)
- Integrated GPS
- Traffic Prioritization
- Operating Temp. -40°F to 176°F
- Dynamic Frequency Selection
- Received Signal Strength Indicator
- IP67 Weather Protection Rating
- Line of Sight Range of 20+ miles



E-LITE 450

PHYSICAL SPECIFICATIONS

	NON-INTEGRATED UNIT	INTEGRATED ANTENNA UNIT
Dimensions:	10.6" x 9.4" x 2.75"	12.6" x 12.6" x 3.46"
Weight:	3 lb.	5 lb.
Environmental:	IP67-rated enclosure	IP67-rated enclosure
Antenna Type:	2x N-Type connectors for external antenna	20 dBi Dual Polarity Panel Antenna
Operating Temperature:	-40°F to 176°F @ 95% humidity RHNC	-40°F to 176°F @ 95% humidity RHNC
Number of Radio Units:	1	Up to 2

WIRELESS INTERFACE

Frequency Range:	4.920-6.100 GHz (*Subject to Country Regulation)
U.S. Restrictions:	5.250 & 5.720 GHz excluded
Peak Transmit Power:	30 dBm (1W)
Receive Sensitivity:	-96 dBm to -72 dBm
Channel Widths:	5 MHz, 10 MHz, 20 MHz, 40 MHz and 80 MHz
Modulations:	OFDM, BPSK, QPSK, 16QAM, 64QAM, 256QAM
Protocol:	IEEE 802.11a/n/ac, E-max (proprietary)
Data Rate:	Up to 866 Mbps in 802.11ac mode Up to 300 Mbps in 802.11n mode Up to 54 Mbps in 802.11a mode
MIMO:	2x2
Topology:	Point-to-Point, Point-to-Multipoint

GENERAL SPECIFICATIONS

Power	50-57 VDC Ethernet Port (802.3af/at Power Over Ethernet)
PoE Port #2 (optional)*	PoE Out (802.3 af, MAX 13w) & Data
Consumption	E-LITE 450 INT: 17W
	E-LITE 450 EXT: 17W
	E-LITE 450 INT DUAL: 19W
Reset to Default	Built-in button
Alignment	Built-in LED Alignment: 4 Level LED Strip (-60 to -100 dBm)
GPS	Built-in GPS for location tracking
Pressure equalization valve	IP67 pressure relief vent to maximize service life

IEEE WIRELESS NETWORKING & SECURITY FEATURES

- | | |
|---|--|
| <ul style="list-style-type: none"> • Compression • Dynamic Ack Timeout • TLS EAP Method • Pass-through EAP Method • Hardware Retries • Preamble Mode • Periodic Calibration • Disconnect Timeout • On-fail Retry • CSMA Disable • Station Channel Scan List • EMAX proprietary protocol | <ul style="list-style-type: none"> • 802.11a/n/ac • 802.11i-WPA/WPA2-PSK • 802.11i-WPA/WPA2-EAP • 802.11i-TKIP • 802.11i-AES-CCM • 802.11i-802.1x • 802.11i-RSN • Radius Authentication • MAC Access Control List • FCC 15.247 • IC RSS-210 • RoHS Compliant |
|---|--|

ORDERING OPTIONS

- E-Lite 450 INT: Single Radio with Integrated Dual-Polarity Panel Antenna
 - E-Lite 450 INT Dual: Dual Radio with (1x) Integrated Dual-Polarity Panel Antenna & (2x) External Type-N Female Connectors
 - E-Lite 450 EXT: Single Radio with (2x) External Type-N Female Connectors
- * OPTIONAL: 2nd PoE-out port available

IEEE STANDARDS

802.11a/n/ac	WiFi protocols
802.11e	WMM and QOS
802.11h	DFS and TPC
802.1d	Ethernet Bridging
802.1p	Traffic Prioritization
802.1q	VLAN
802.1s	Spanning Tree
802.1w	Rapid Spanning Tree
802.3ab	Gigabit Ethernet
802.3ac	Extended Frame Size for 802.1q & 802.1p support
802.3ad	Link Aggregation/Port Bonding/Port Tracking
802.3i	10 Mbps Ethernet
802.3u	100 Mbps Ethernet and Auto-Negotiation
802.3x	Full Duplex and Flow Control
802.1ad	Service Tags
IGMP	Internet Group Management Protocol v1, v2

ADDITIONAL NETWORKING FEATURES

- | | | |
|--|--|--|
| <ul style="list-style-type: none"> • OSPF • FTP/TFTP • HTTP • Telnet | <ul style="list-style-type: none"> • Syslog • Routing • Firewall/NAT • NTP | <ul style="list-style-type: none"> • SSH • SNMP • VPN • DHCP Client/Server |
|--|--|--|

ENCOM STRATOS I/O (free control/monitoring software included)

- Can now access I/O devices from any network
- Works with any broadband network (ENCOM or other)
- Profile-based configurations with SQL database
- Real-time signal strength and connection quality monitoring with user-defined color-coded link status
- Built-in bandwidth test, network traffic monitoring and spectrum scan tools
- Audio antenna alignment tool + system-wide Ping tool
- Radio Discovery with remote radio IP change capability
- Network mapping with automatic geolocation for GPS enabled units
- User-defined email alerts for changes to online status, decreased signal levels (dBm), connection quality and fluctuations in data rate
- Streamlined device programming and ability to manage all devices from a central location



*ENCOM Broadband radios require professional installation.

Specifications subject to change without notice. Visit www.encomwireless.com for updates.

© 2021 Encom Wireless Inc. All Rights Reserved.

Email: sales@encomwireless.com

Toll Free: 1.855.730.1122

Phone: 1.403.230.1122

#7, 640 42nd Ave NE Calgary, AB T2E 7J9

Web: www.encomwireless.com

